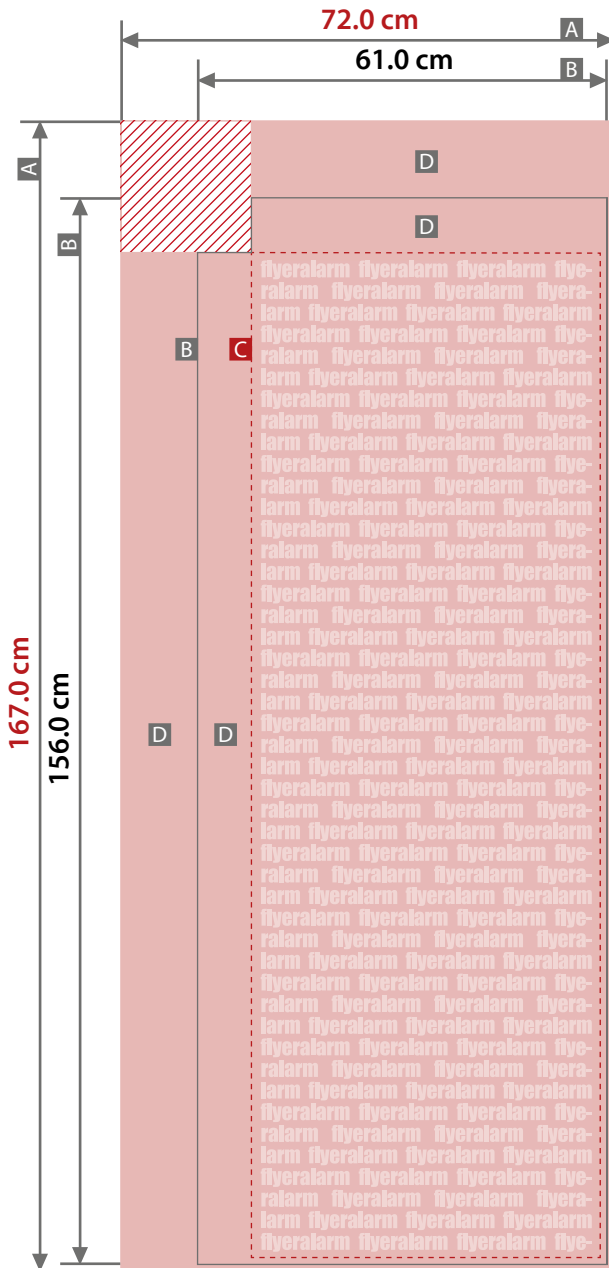


Square flag with side arm
Small



Create file alignment as shown
Even applies if the alignment of your artwork does not correspond to the alignment of the format.

Use of the template
Apply the template with a scale of 1:1 to position your graphical elements and to verify your design settings – the template already has the correct artwork format (do not scale). Please remove the template from your artwork again before the upload.

Sketches are not to scale

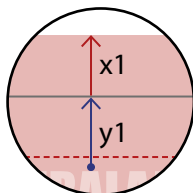
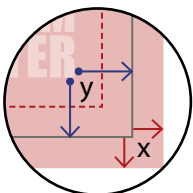
Seam allowance (x)
right / bottom 1.0 cm
Safety distance (y)
right / bottom 3.0 cm

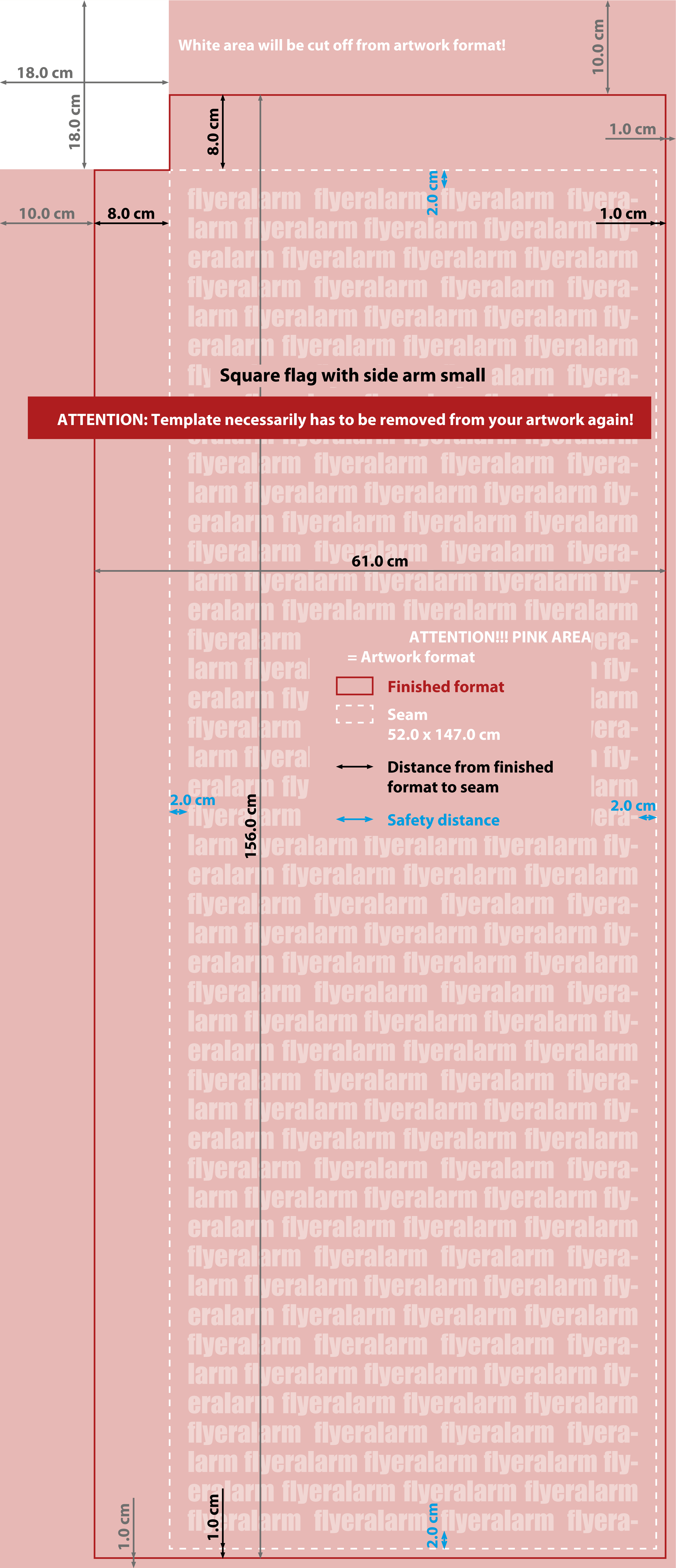
Seam allowance Hem stitch (x1)
left / top 10.0 cm
Safety distance Hem stitch (y1)
left / top 10.0 cm

A = Artwork format
B = Finished format
C = Seam
D = Hem stitch
diameter 5.0 cm

This area will be cut off from artwork format (see template)

Our tip:
We recommend to wash flag before use to remove possible excess colour.





Square flag with side arm small

System size (plug-in pole without base) 59.0 x 230.0 cm

- Application e. g. as beach or snowflag
- easy assembly and disassembly

Base variants



- Metal cross base for rotatable flag
- (approx. 2 kgs; diameter 80 cm)
- incl. 12l water weight



- PVC ground drill for rotatable flag, suitable for sand and soft grounds (ground anchoring 24 cm)



- Base plate for rotatable flag (12 kgs, 55 x 55 x 0.5 cm), with grip hole for an easy transport



- Car wheel base for rotatable flag (58.5 x 21.5 cm)



Assembly instructions

Square flag with side arm



Scope of delivery



1 x Carrying bag
1 x Plug-in pole
1 x selected base variant

Example images with base panel variant!

For system with print please observe:
1 x Print on flag material

Assembling of print



1. Plug in poles.



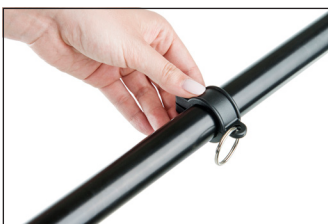
2. Fix side arm.



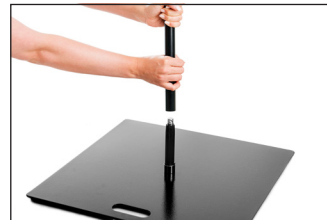
3. Pull square-flag on pole.



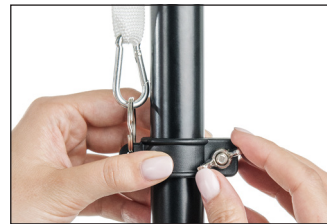
4. Pull square-flag completely over upper pole part.



5. Loosen wing screw and move the clamping ring up.



6. Stick the square flag into the base plate (selected base variant).



7. Mount the snaplink hook. Stretch out the square flag and tighten the clamping ring with the wing screw.



Done!

Tips and Tricks

The durability of a flag depends a lot on its exposure to wind, air pollution and other climatic conditions. Depending on its location, other influences may also occur. A normal wear and tear can therefore not be avoided.

Flags are among fabrics one of the most heavily stressed material and are therefore subject to strong deterioration due to their outdoor use.

That's how you can improve the durability of your flags:

- Bring in your flag at night in case of bad weather conditions or strong wind;
- Make sure the flag does not touch anything when blowing as this might increase the risk of an early material wearout;
- Repair holes and other damages immediately;

The normal wearout that comes with age and period of usage does not justify a complaint. No rights of claim can be derived from damages to normal wear and tear.