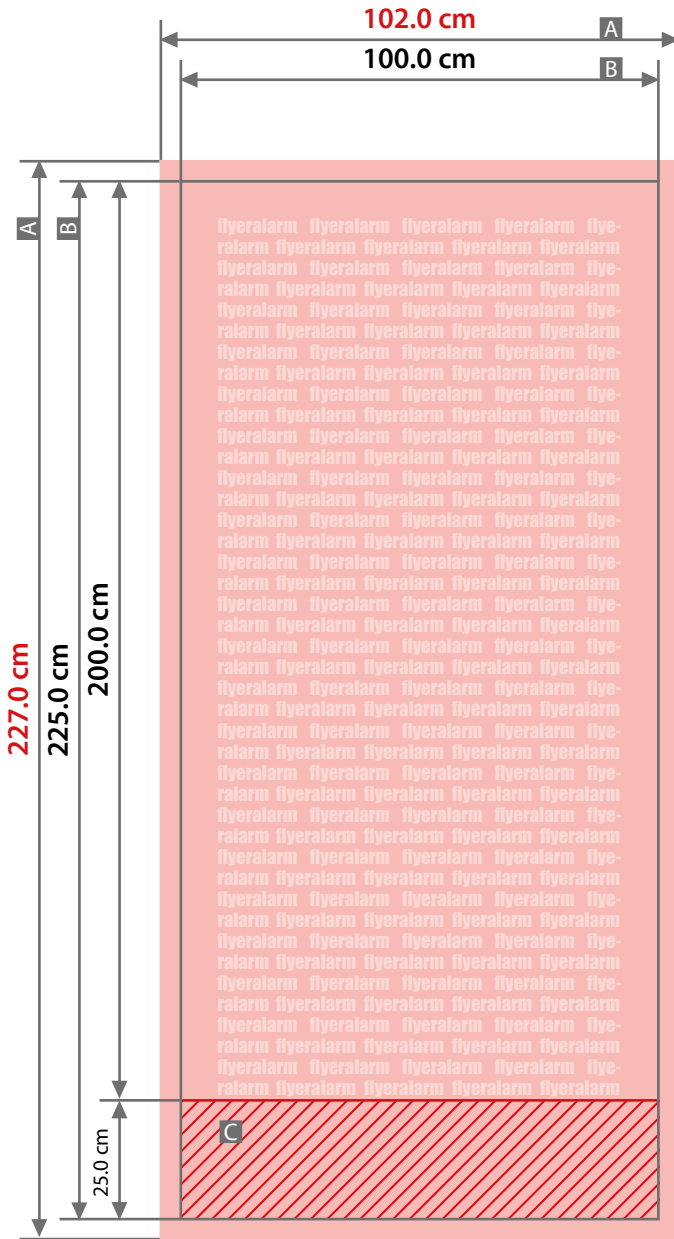


Display Roll-Up Black, 100 cm x 200 cm

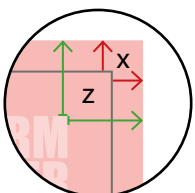


Sketches are not to scale

Bleed (x)
1.0 cm

Safety distance (z)
4.0 cm

A = Artwork format
B = Finished format
C = Not visible area



Assembly instructions

Display, Roll-Up Black



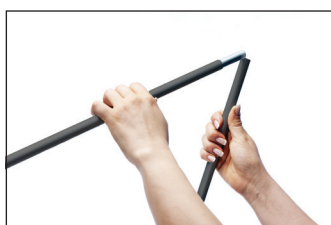
Scope of delivery



1 x Display system
1 x Carrying bag

For system with print please observe:
1 x banner print

Assembly



1. Open three-part pole and put it together.



2. Put pole in provided hole in housing.



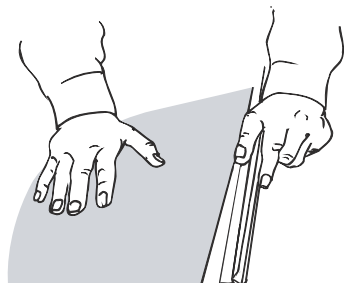
3. Pull out banner from housing and position plastic spike central in the upper profile slot.



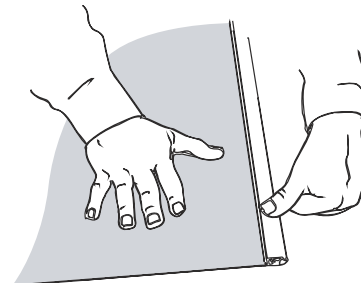
4. Done!

Tip: Stand behind the system and tilt the system backwards when pulling out the banner. The profile can then be attached more easily.

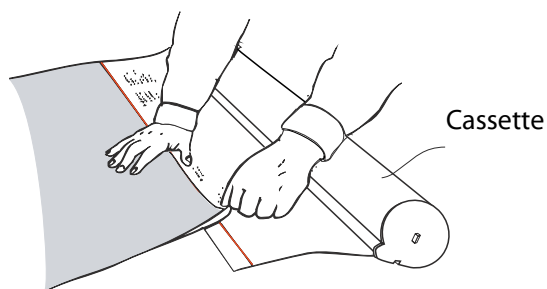
Assembly instructions of banner



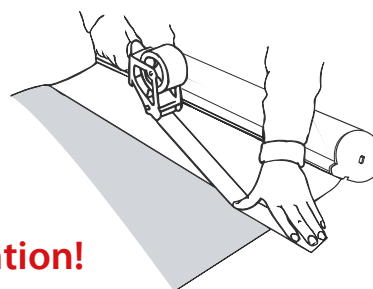
1. Open the clamping strips and insert the upper end of the banner.



2. Fasten banner in clamping strip.

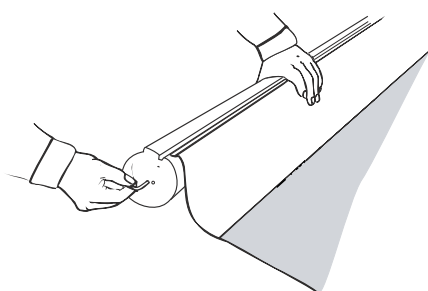


3. Remove protection foil. Position lower end of banner (print upwards) along the red line and affix it.

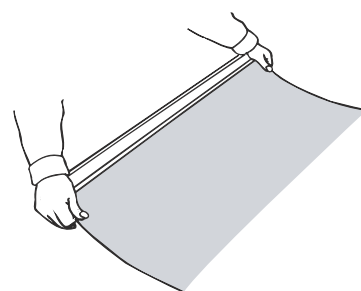


Attention!

4. We recommend to additionally secure the banner on the back with adhesive tape.



5. Hold cassette and remove guard pin on the left side. The mechanism is now activated.



6. Roll up banner carefully. Done!