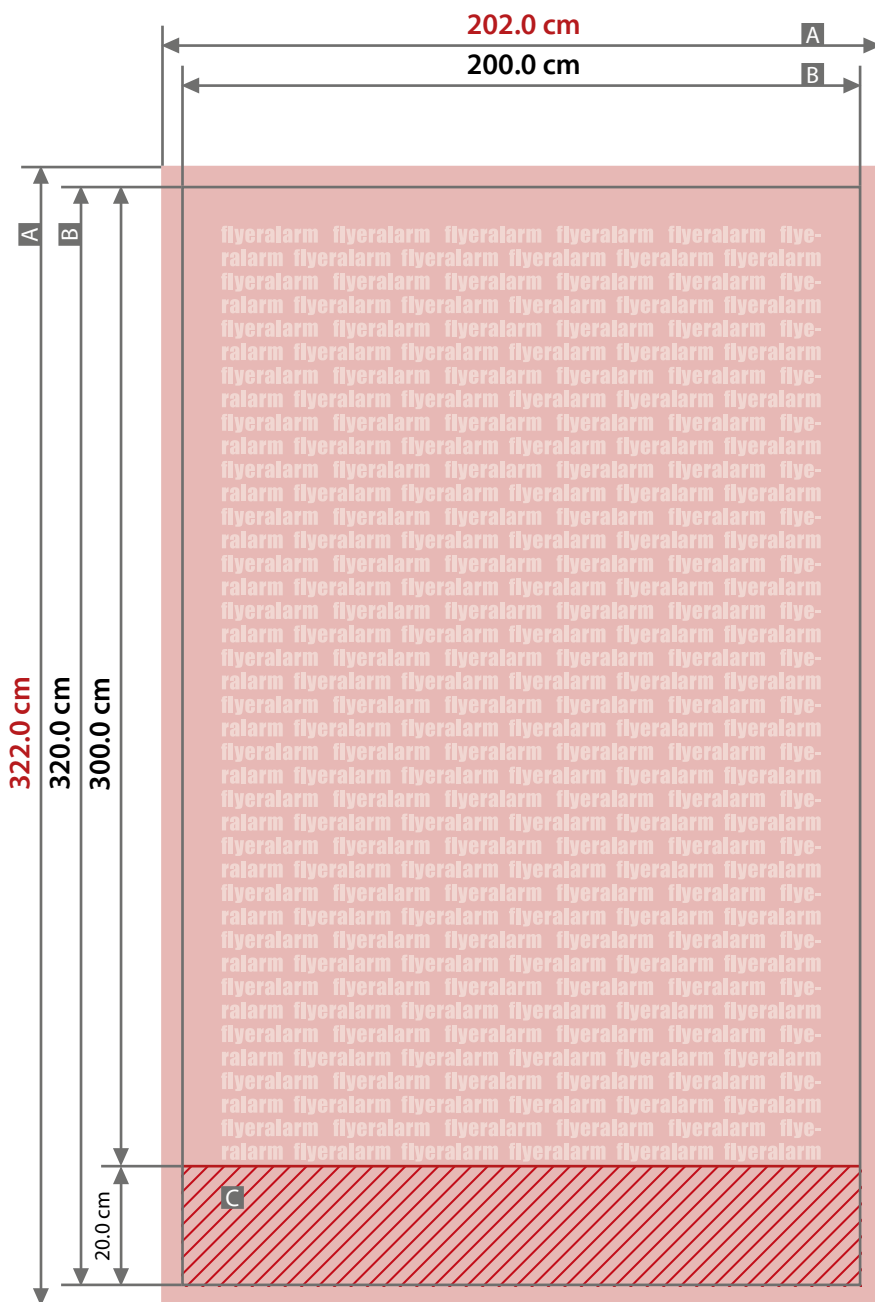


Display

Roller Banner XXL, 200 cm x 300 cm

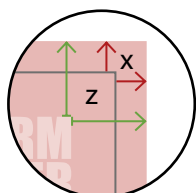


Sketches are not to scale

Bleed (x)
1.0 cm

Safety distance (z)
4.0 cm

A = Artwork format
B = Finished format
C = Non visible area



Assembly instructions

Display, Roller Banner XXL



Scope of delivery



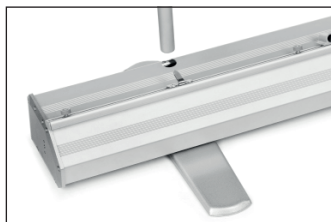
- 1 x Display system
- 1 x Carrying bag

For system with print please note:
1 x Banner print

Assembly



1. Fold out both feet.



2. Place telescopic rods into the holes provided in the housing.



3. Pull the banner print out of the housing.



4. Hook the rail of the banner into both telescopic rods using the hooks.



5. Set and lock both telescopic rods at the same height.



6. Done!

Our tip: Two people should carry out the assembly!

Assembly - Exchanging the banner Display, Roller Banner XXL

Our tip:
Two people should carry out the assembly!

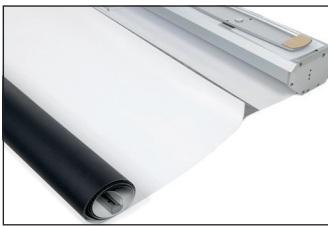
Removing the existing banner

1. Completely pull out and hold onto the old banner.



2. Insert locking pin into the small hole and secure the spring tension of the roller.

The pin prevents uncontrolled rolling up of the banner, which would result in a defective spring.



3. Insert the banner into the rail using the bar and tighten the screws. They must be on the back of the banner.



4. Loosen the screws on the rail and pull out banner using the bar.

Assembling the new banner



1. Peel off protective paper from the bar that is delivered along with the new banner.



2. Attach reverse side of the upper end of the banner to the adhesive surface of the bar.



3. Insert the banner into the rail using the bar and tighten the screws. They must be on the back of the banner.



4. Roll up the banner to about 20 cm (printed image inside).



5. Turn the cartridge upside down (printed image facing up). Attach the lower end of the banner to the front and back with adhesive tape.



6. Hold the banner, loosen the pin and carefully let it roll up.