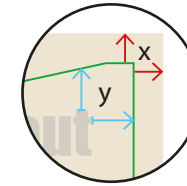
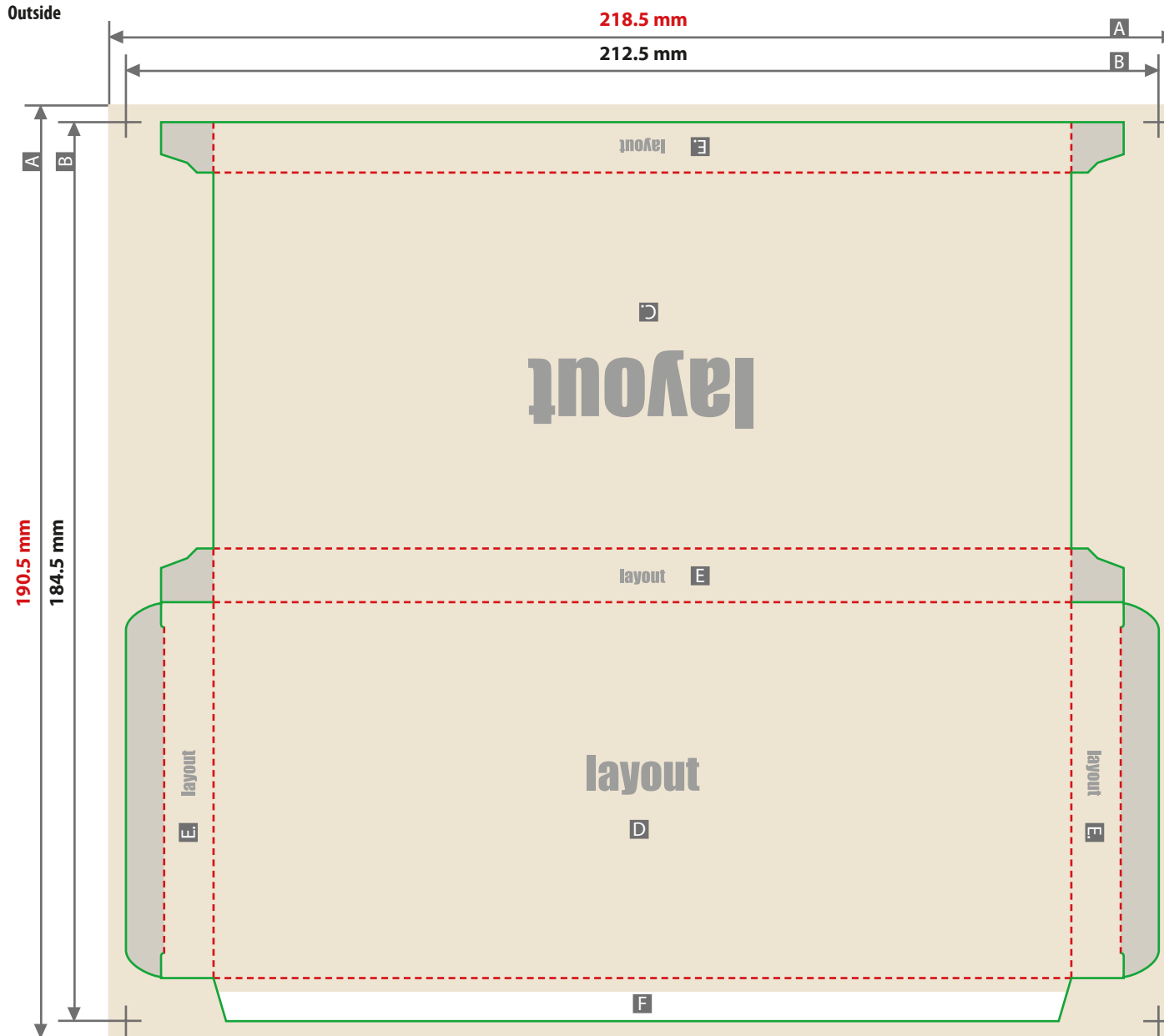
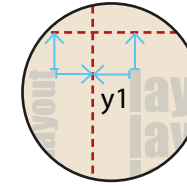


Folded box, glued
rectangle, 7.7 x 1.1 x 17.6 cm



Bleed (x)
3 mm
 Safety distance (y)
4 mm



Safety distance groove (y1)
4 mm

- A = File format
- B = Final format
- C = Front
- D = Reverse
- E = Side part
- F = Adhesive flap

Product size
77 mm x 11 mm x 176 mm

- - - Fold line
- - - Safety distance
- Partially visible area, apply background only

Create file alignment as shown!

Even applies if the alignment of your artwork does not correspond to the alignment of the format.

You must select the page orientation in your graphic programme. Do not rotate any pages as print PDFs.

Please consider the position of the layout / the alignment of the frontside, backside and the flaps.

Adhesive flap

The unprinted white area will be automatically created by us. Apply background only!

Please use the print templates on our website.

ATTENTION:

Please remove the print template before saving your file.

