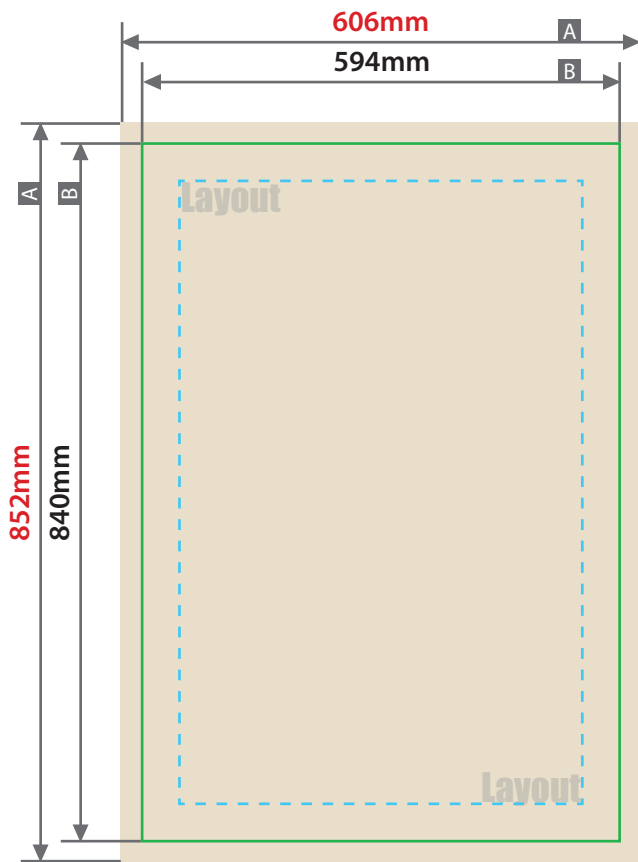
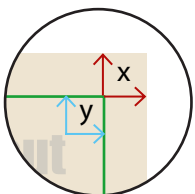


Twin-wall sheet, no eyelets, no drilled holes
A1 (59.4cm x 84.0cm)

Sketches are not to scale

Bleed (x)
6mmSafety distance (y)
14mm

A = file size

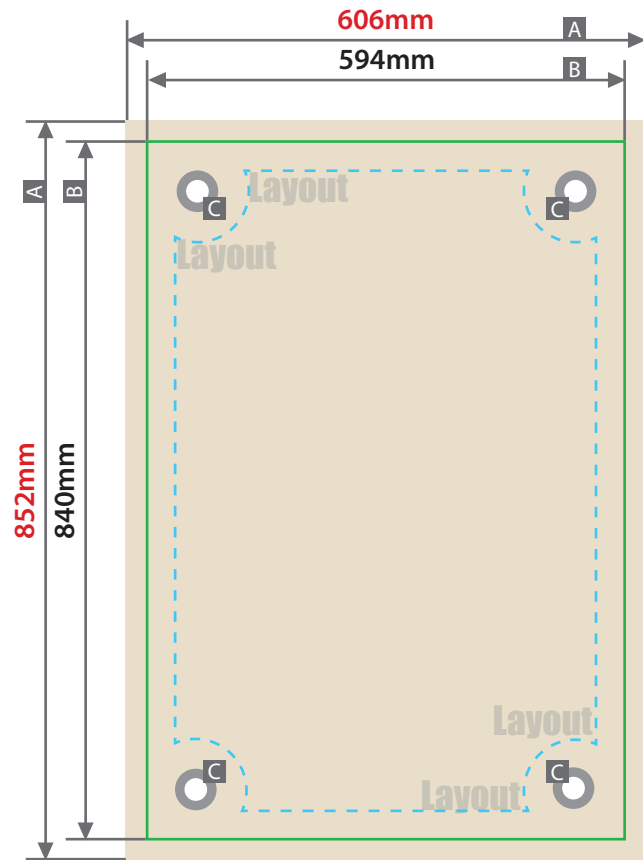
B = final format

- - - Safety distance

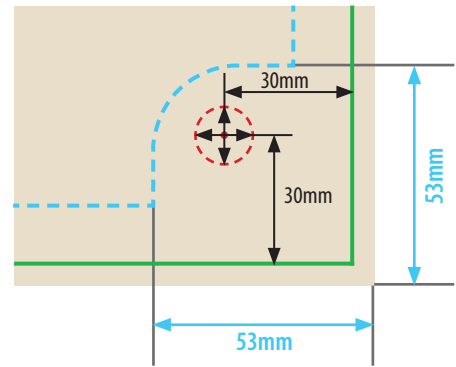
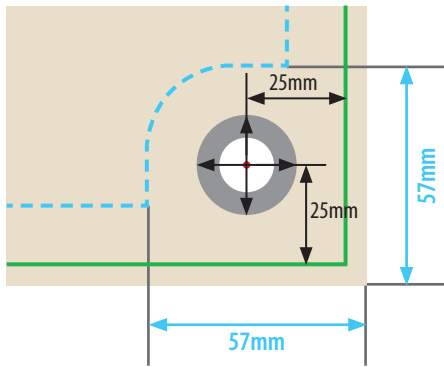
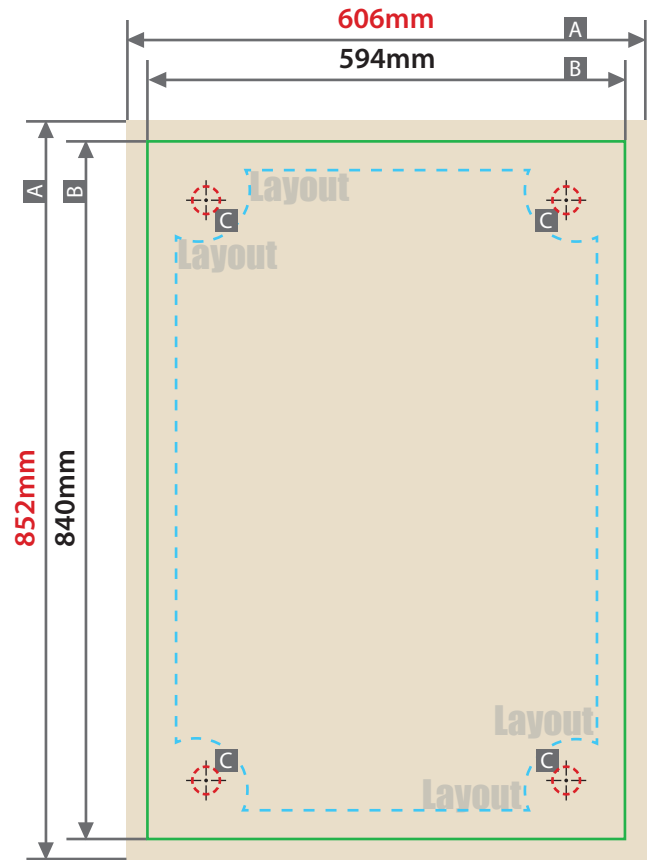
! Minimum line thickness 3 pt

Twin-wall sheet, eyelets and drilled holes possible
A1 (59.4cm x 84.0cm)

With eyelets

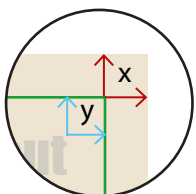


Corner drilling



Sketches are not to scale

Bleed (x)
6mm
Safety distance (y)
14mm



A = file size
B = final format
C = eyelets, drilled holes,
only create background here

--- Safety distance

⚠ Minimum line thickness 3 pt

Eyelets

- 4 eyelets
- External diameter 25mm
- Internal diameter 10mm
- Safety distance to finished size 25mm

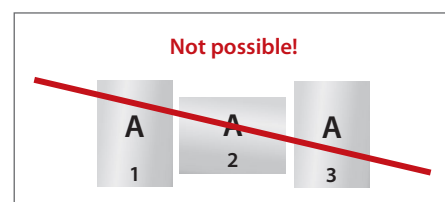
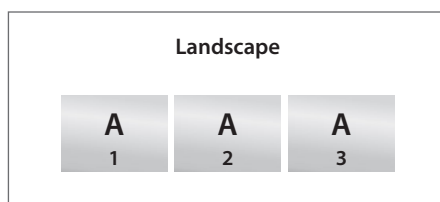
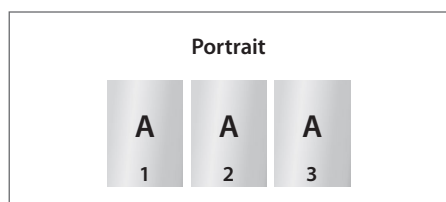
Drilled holes

- 4 drilled holes
- Diameter 6mm
- Safety distance to finished size 30mm

Information

› Format orientation

- Deliver **all** document pages (1. 2. 3 etc.) in your chosen and the same format orientation: Portrait or landscape
- It is not possible to mix portrait and landscape
- The format orientation needs to be created in the design programme - please do not rotate any of the pages in the print PDF
- Format orientation must match the read direction in the file

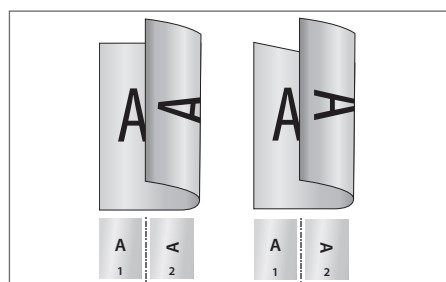


› Document page order

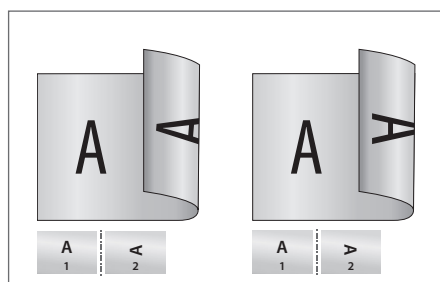
Document page sequence must be in chronological order, starting with document page 1 / title

› Different read directions in design for double sided prints

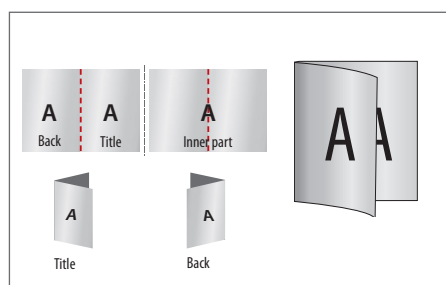
Please be aware that, in case of a different read direction (A) in a double sided print, the unfinished flat sheets are rotated 180 around their vertical axis. Please choose the orientation (rotation) accordingly in your design.



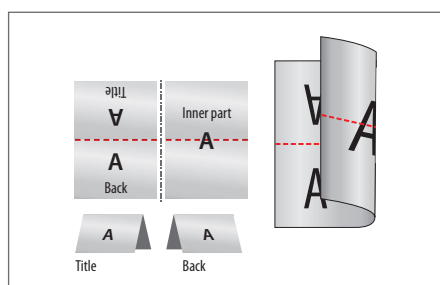
Portrait



Landscape



Portrait single fold



Landscape single fold

› Questions and help

We are here to help: call our customer service centre today.